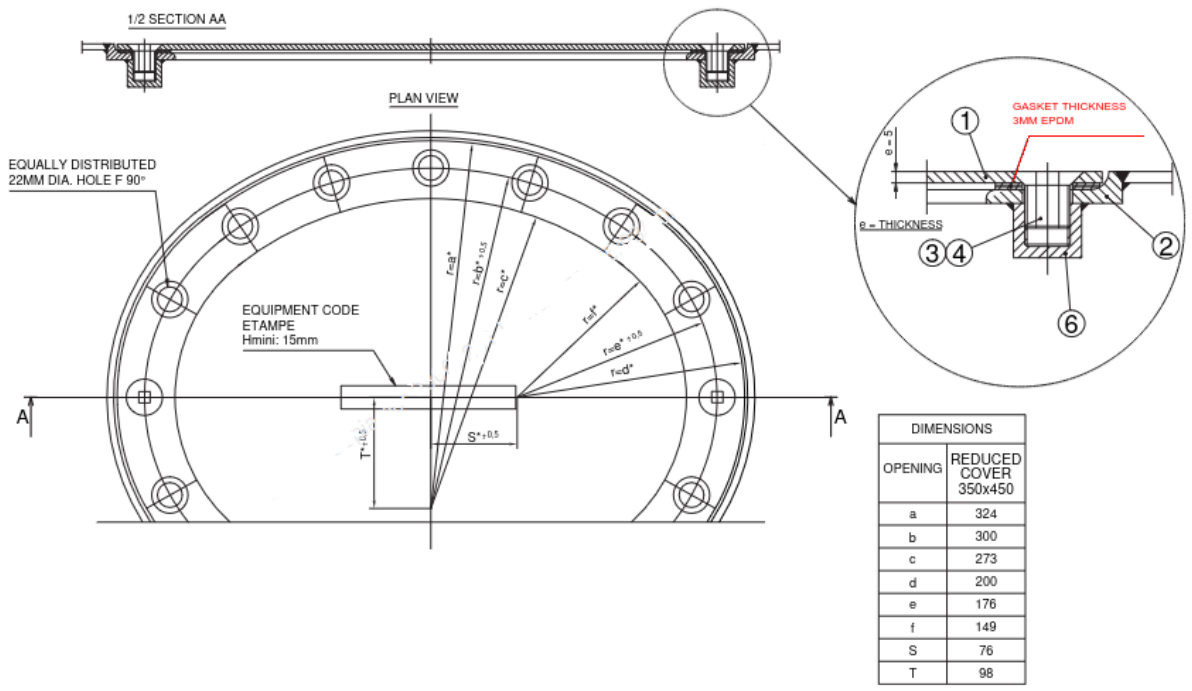


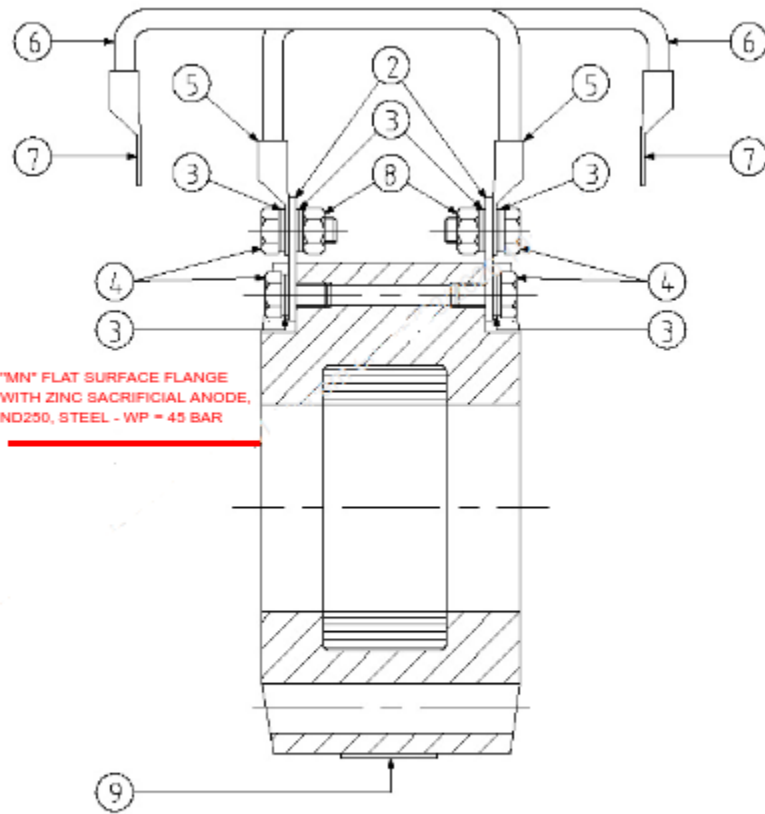


**BRAZILIAN NAVY  
NAVY INDUSTRIAL DIRECTORATE  
TECHNICAL DRAWING**

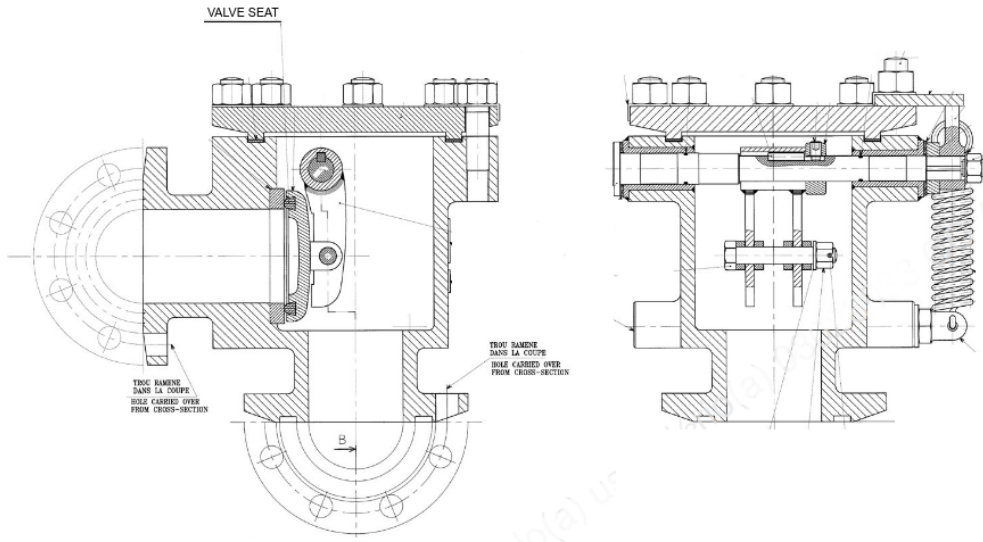
**ATTACHMENT A**



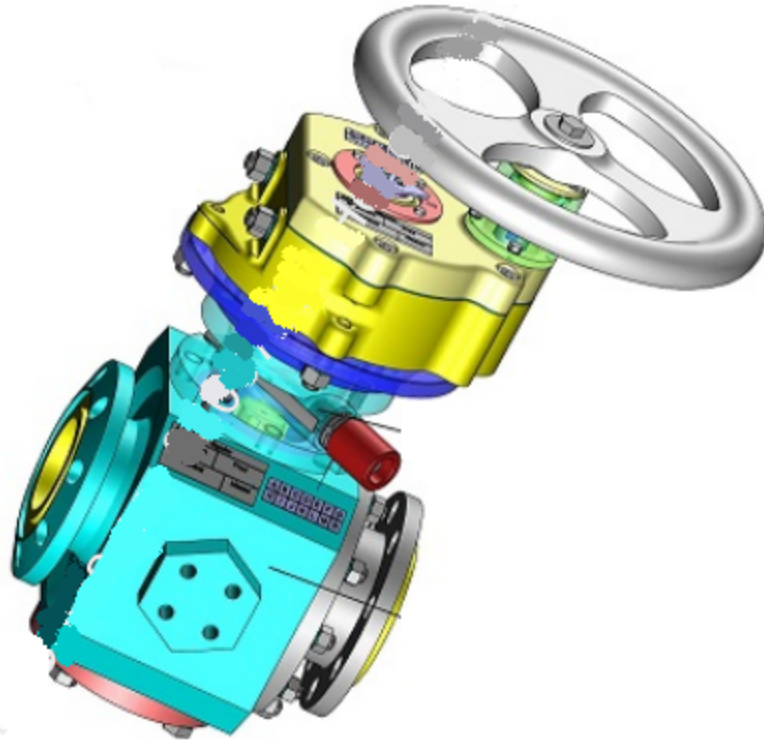
# ATTACHMENT B



# ATTACHMENT C

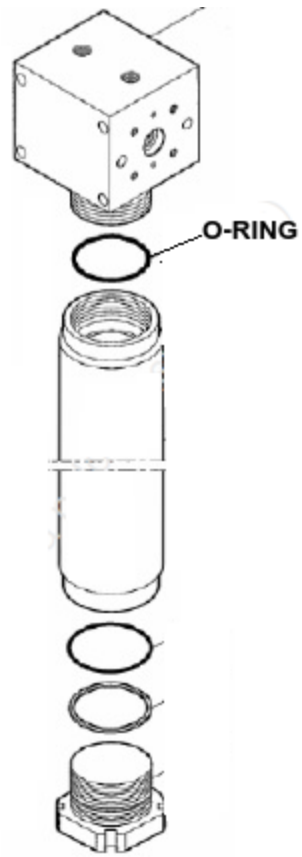


ATTACHMENT D





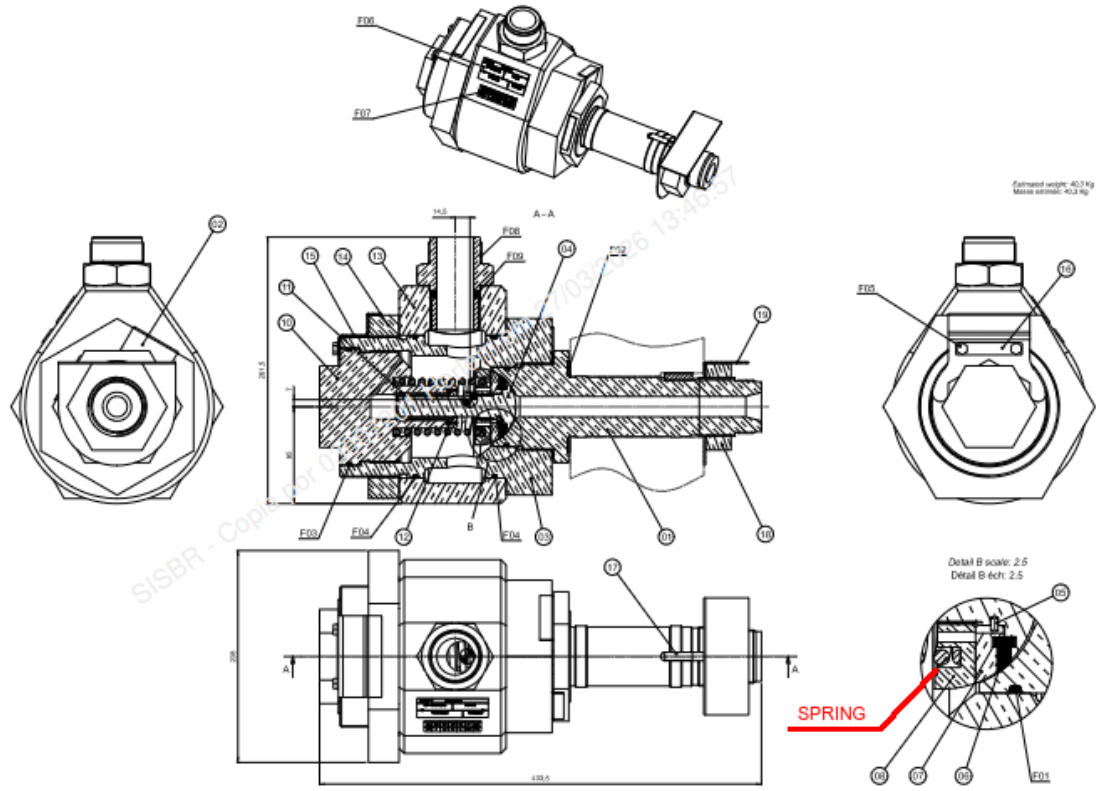
# ATTACHMENT F



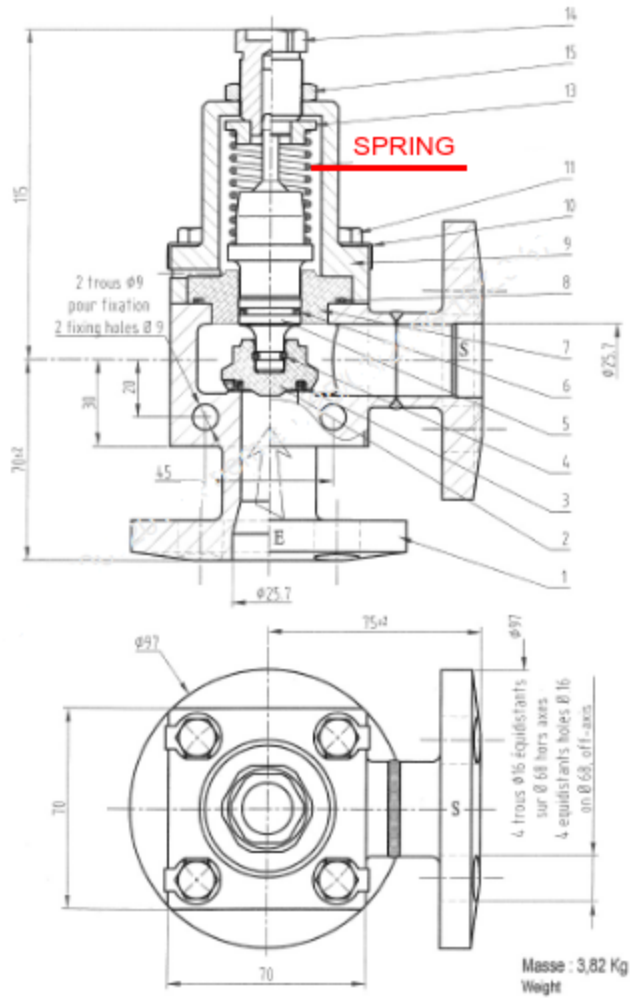
22



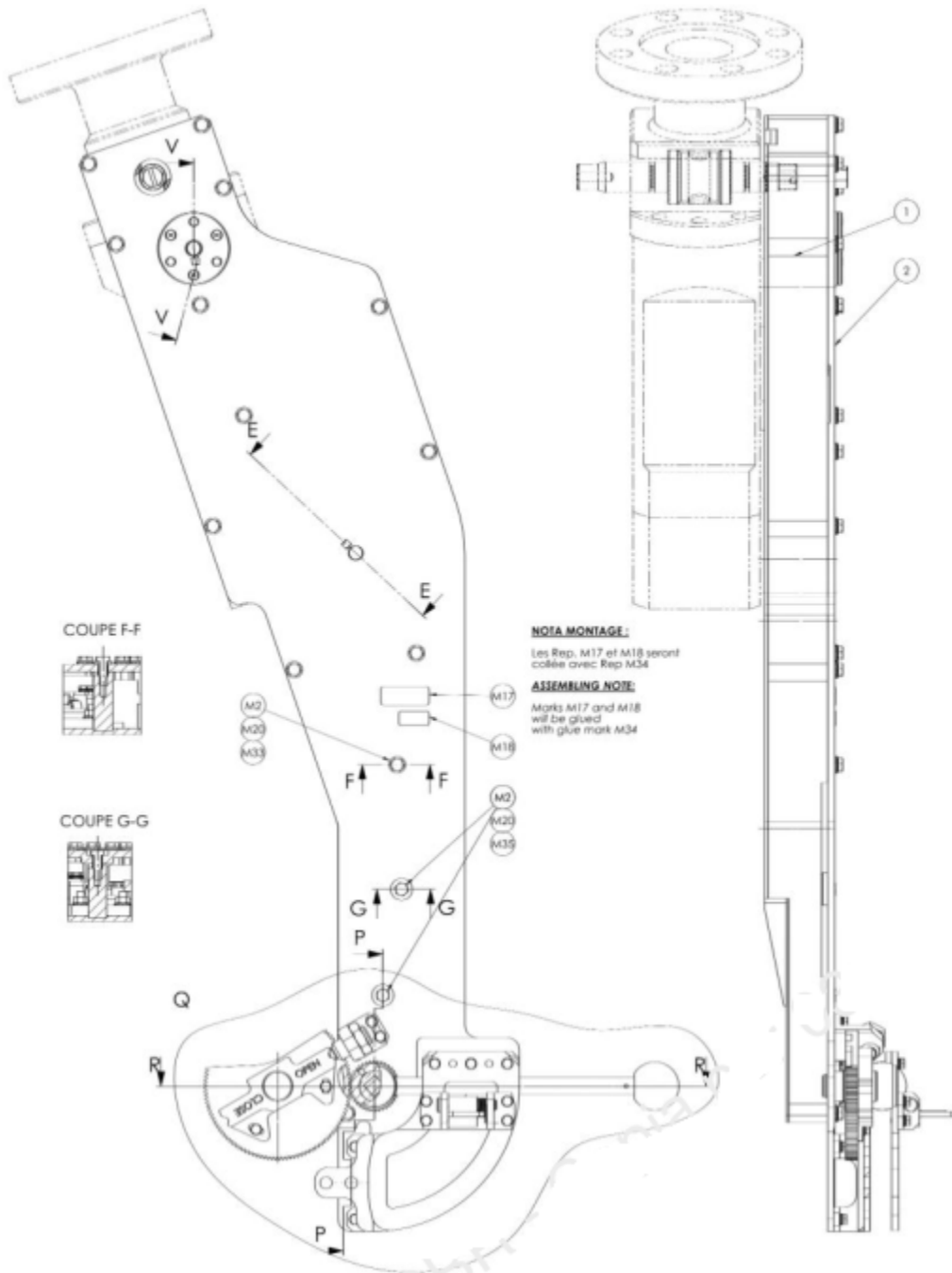
# ATTACHMENT H

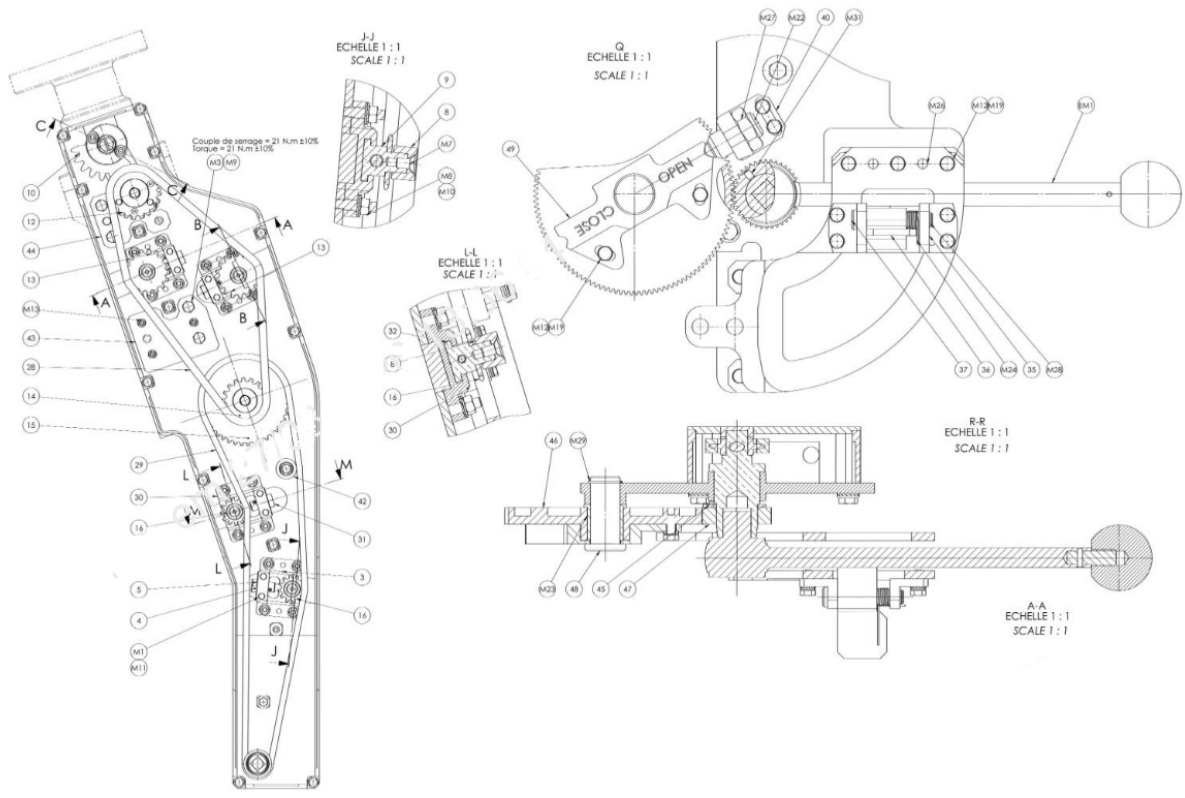


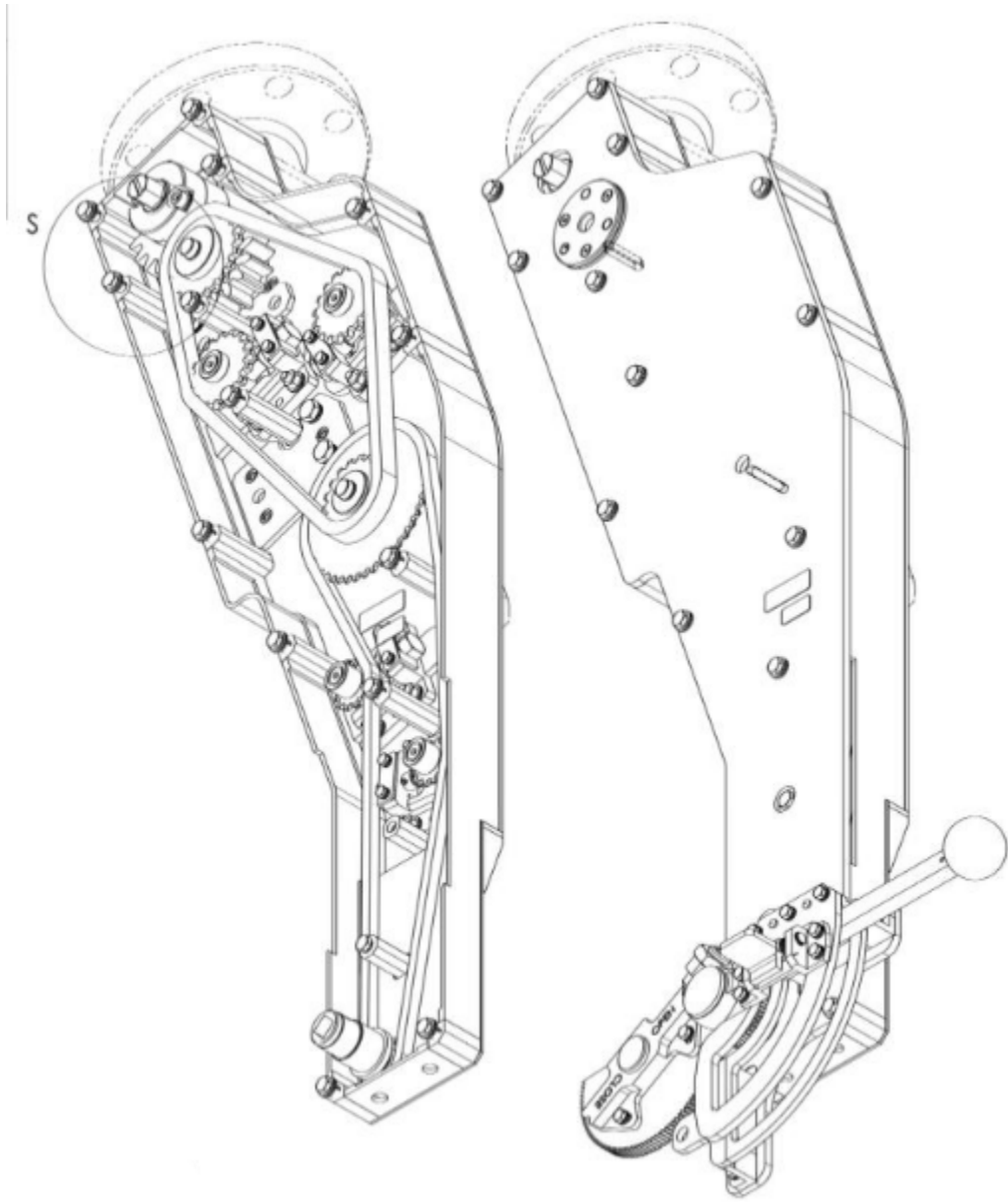
# ATTACHMENT I

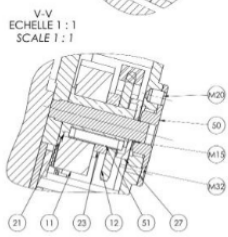
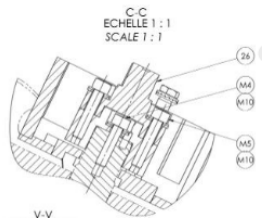


# ATTACHMENT J

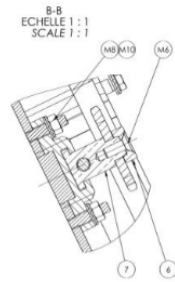
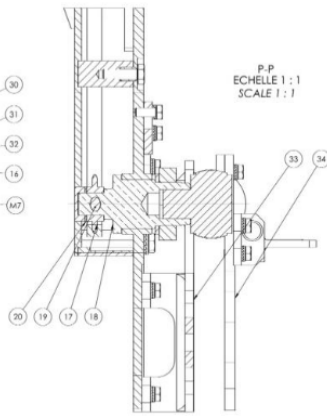
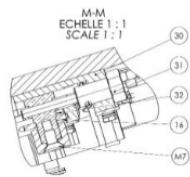
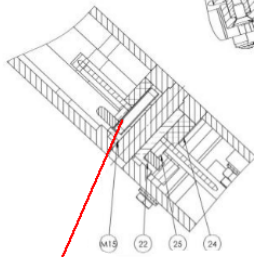






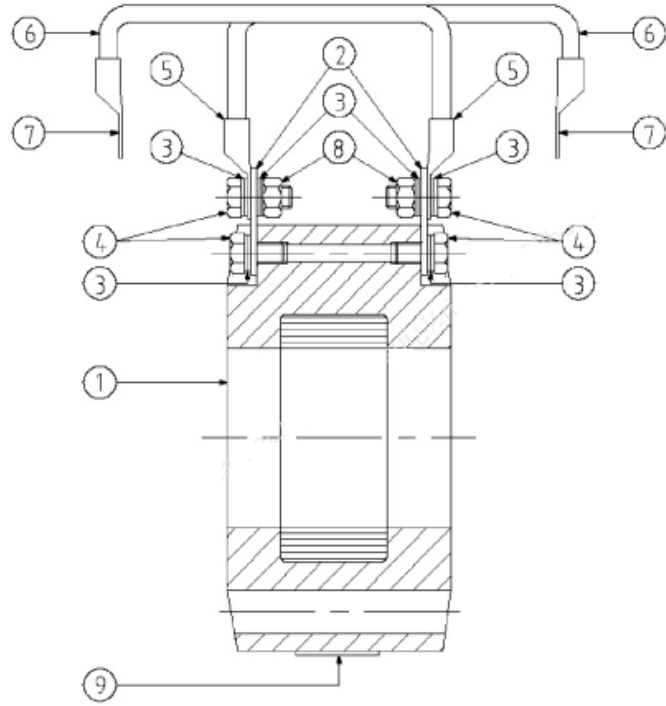


E-E  
ECHELLE 1 : 1  
SCALE 1 : 1

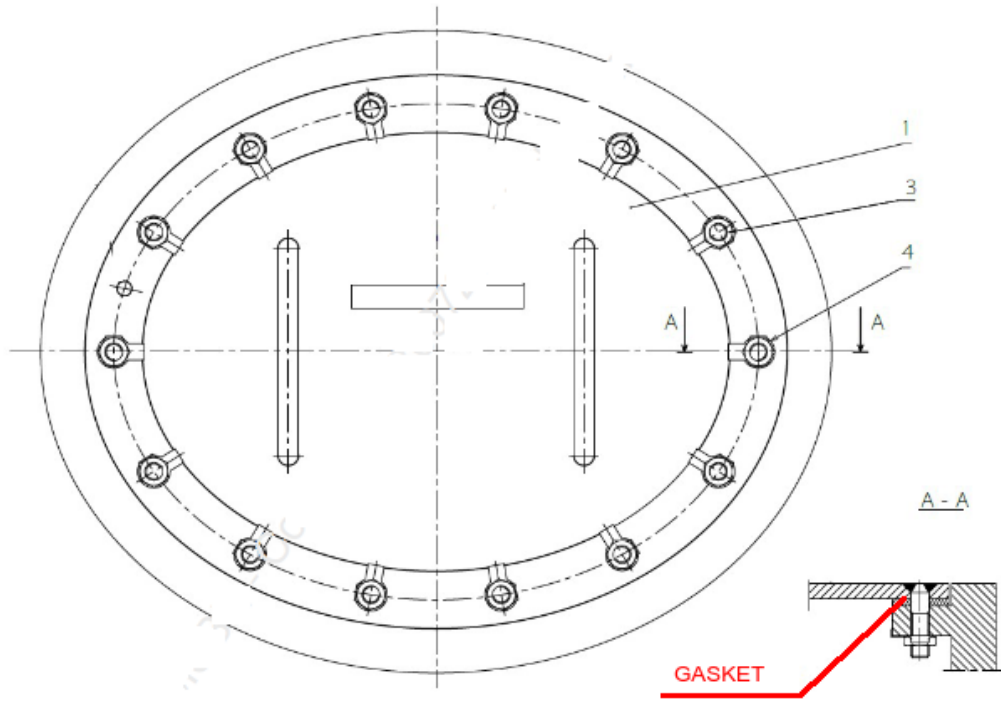


KEY 6X6X30

# ATTACHMENT K

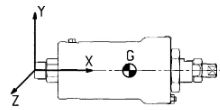
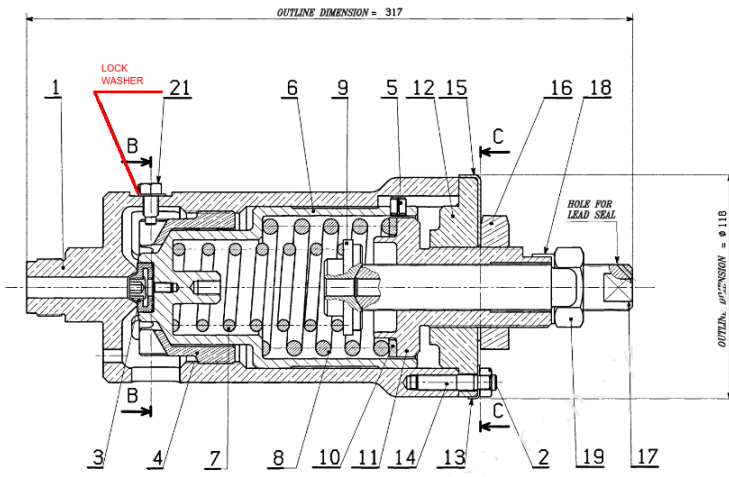


# ATTACHMENT L





# ATTACHMENT N



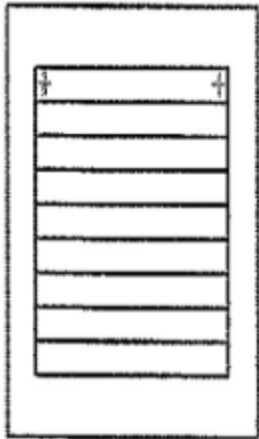
CENTER OF GRAVITY

X = 165mm  
 Y = 0mm  
 Z = 0mm

WEIGHT

10.4Kg

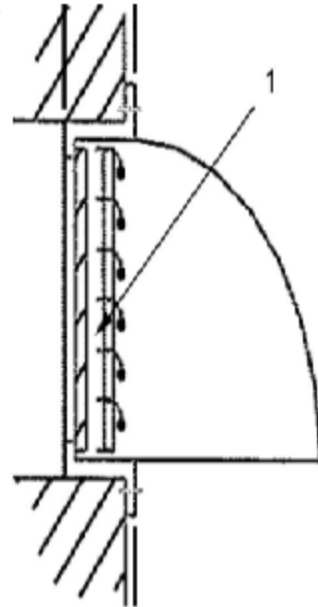
# ATTACHMENT O



GRID CLOSED

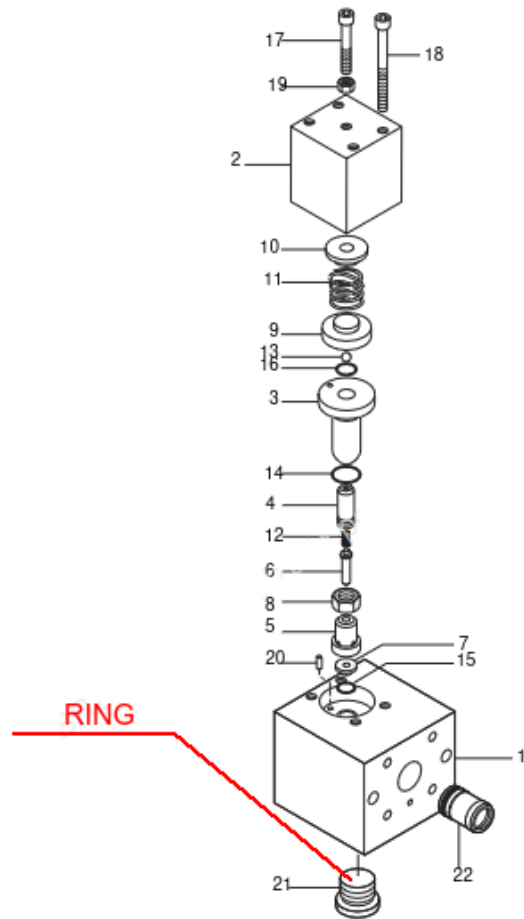


GRID OPEN

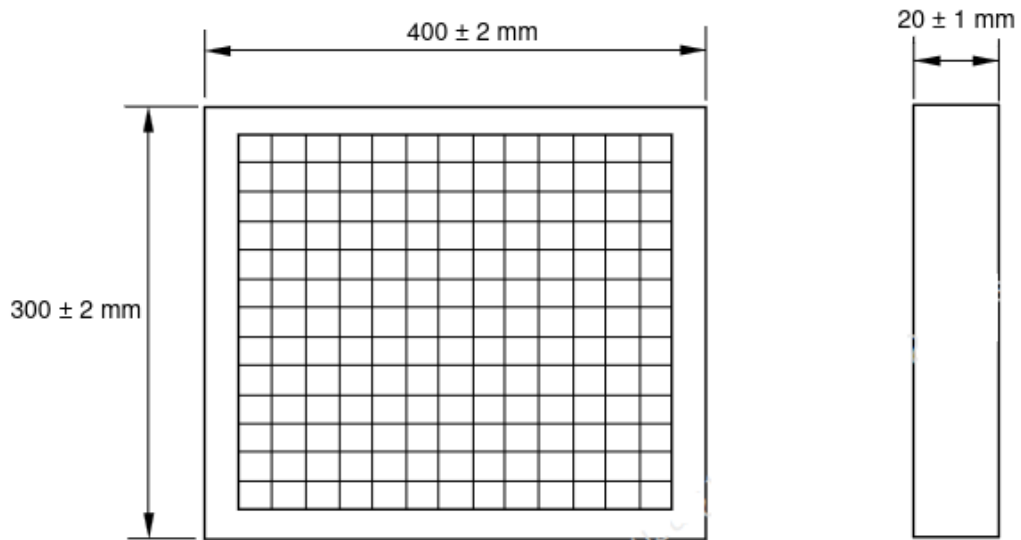


GRID OPEN

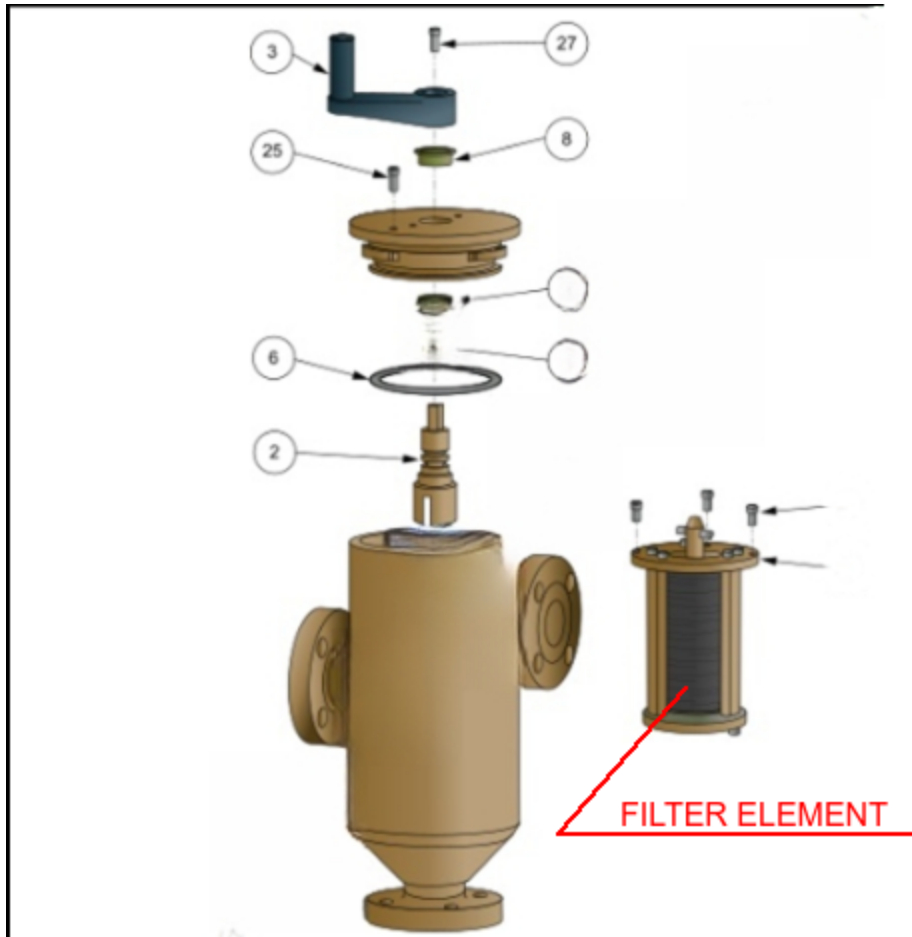
# ATTACHMENT P



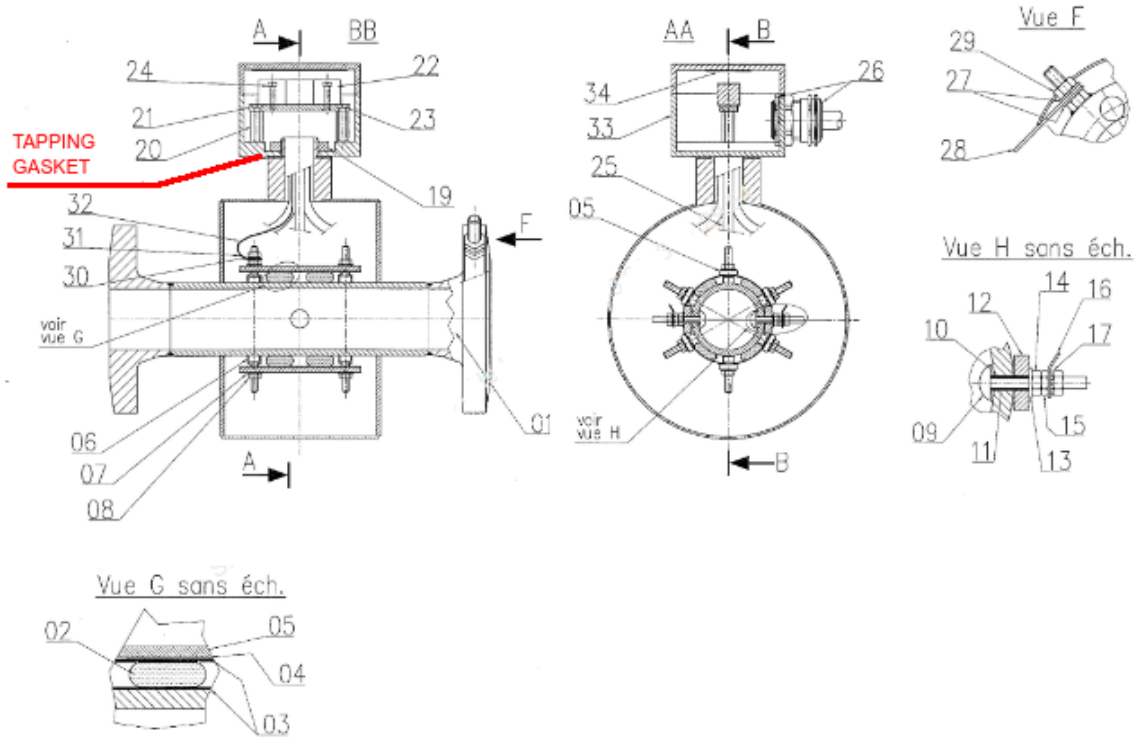
# ATTACHMENT Q



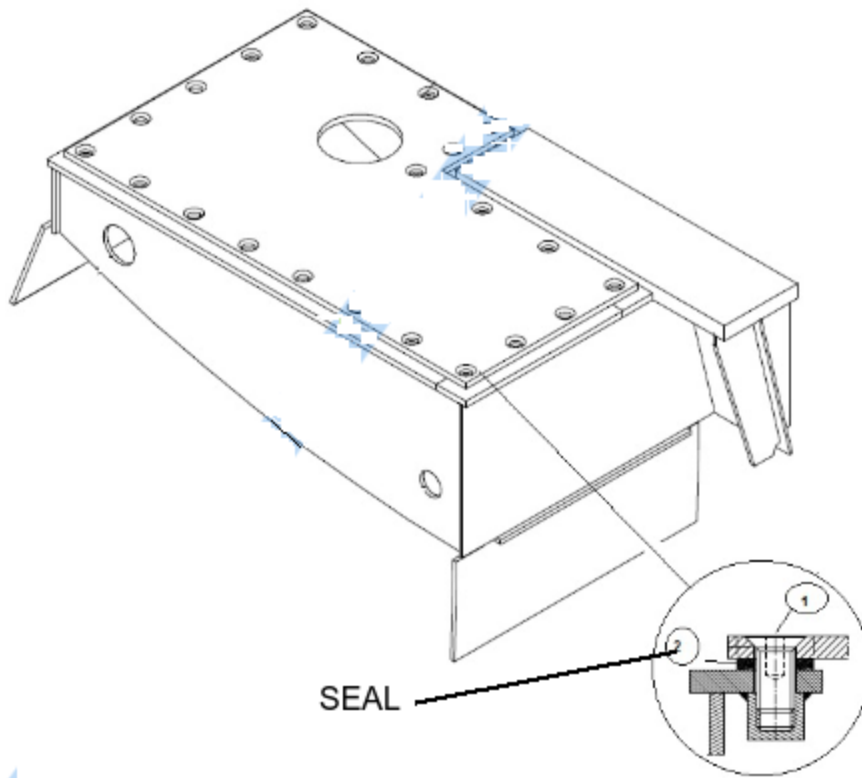
# ATTACHMENT R



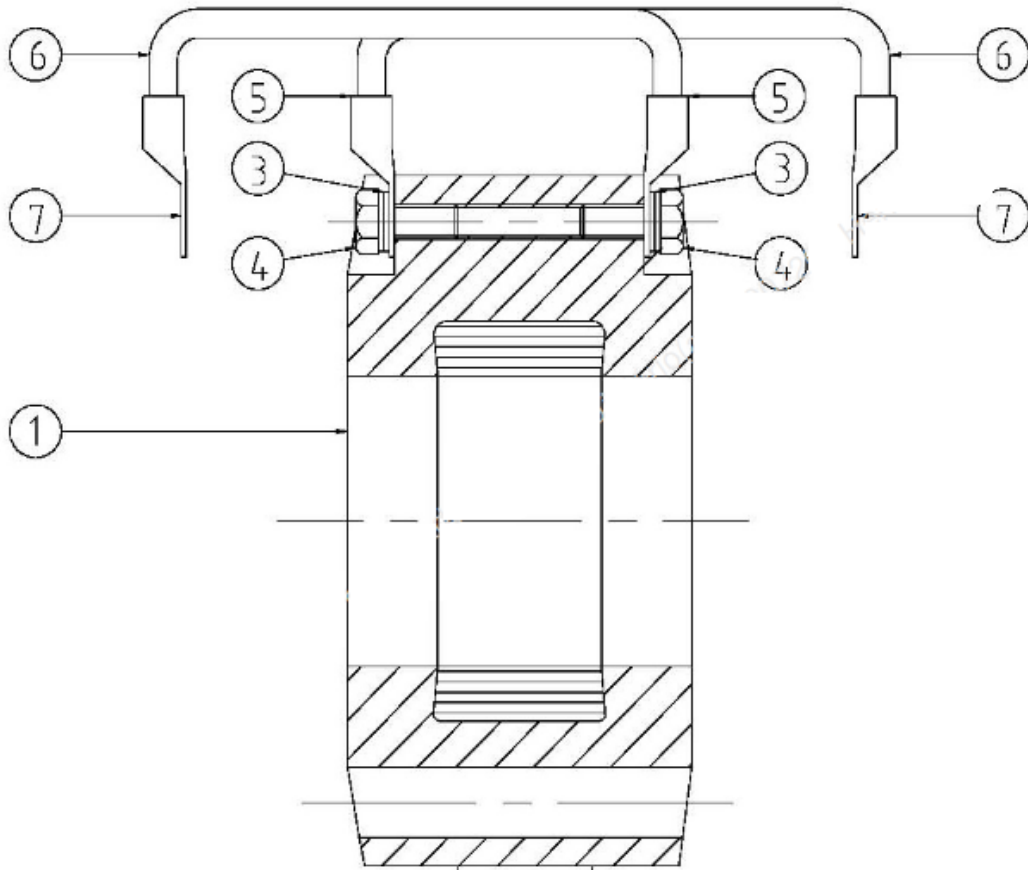
# ATTACHMENT S



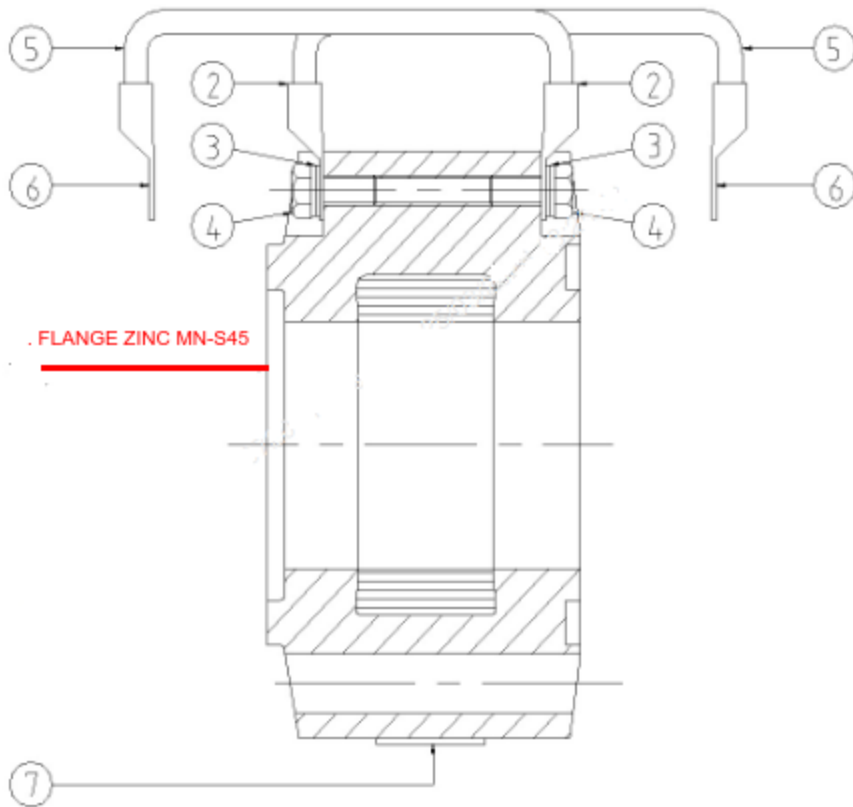
# ATTACHMENT T



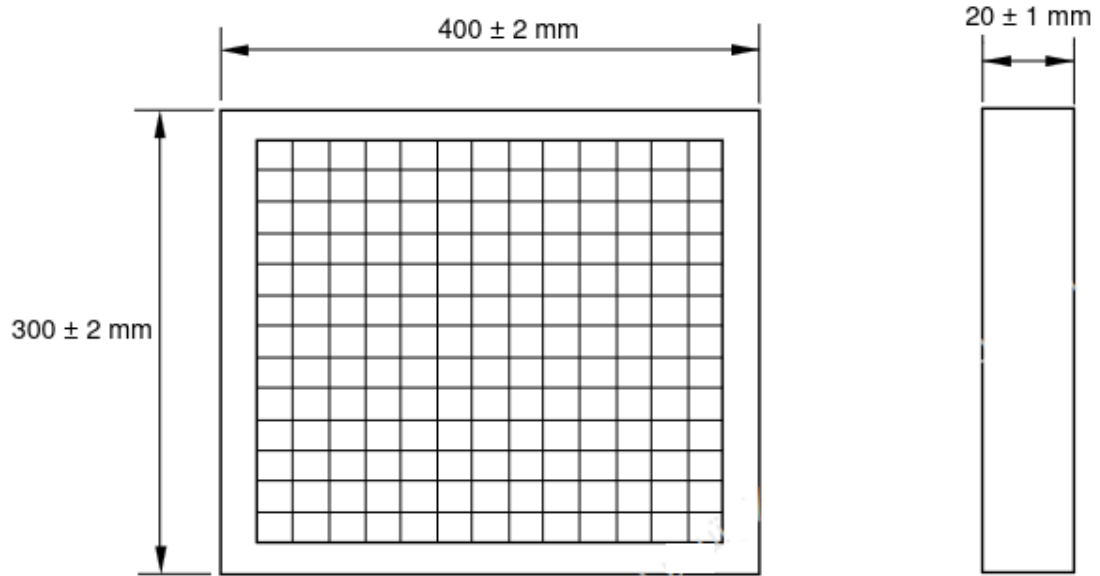
# ATTACHMENT U



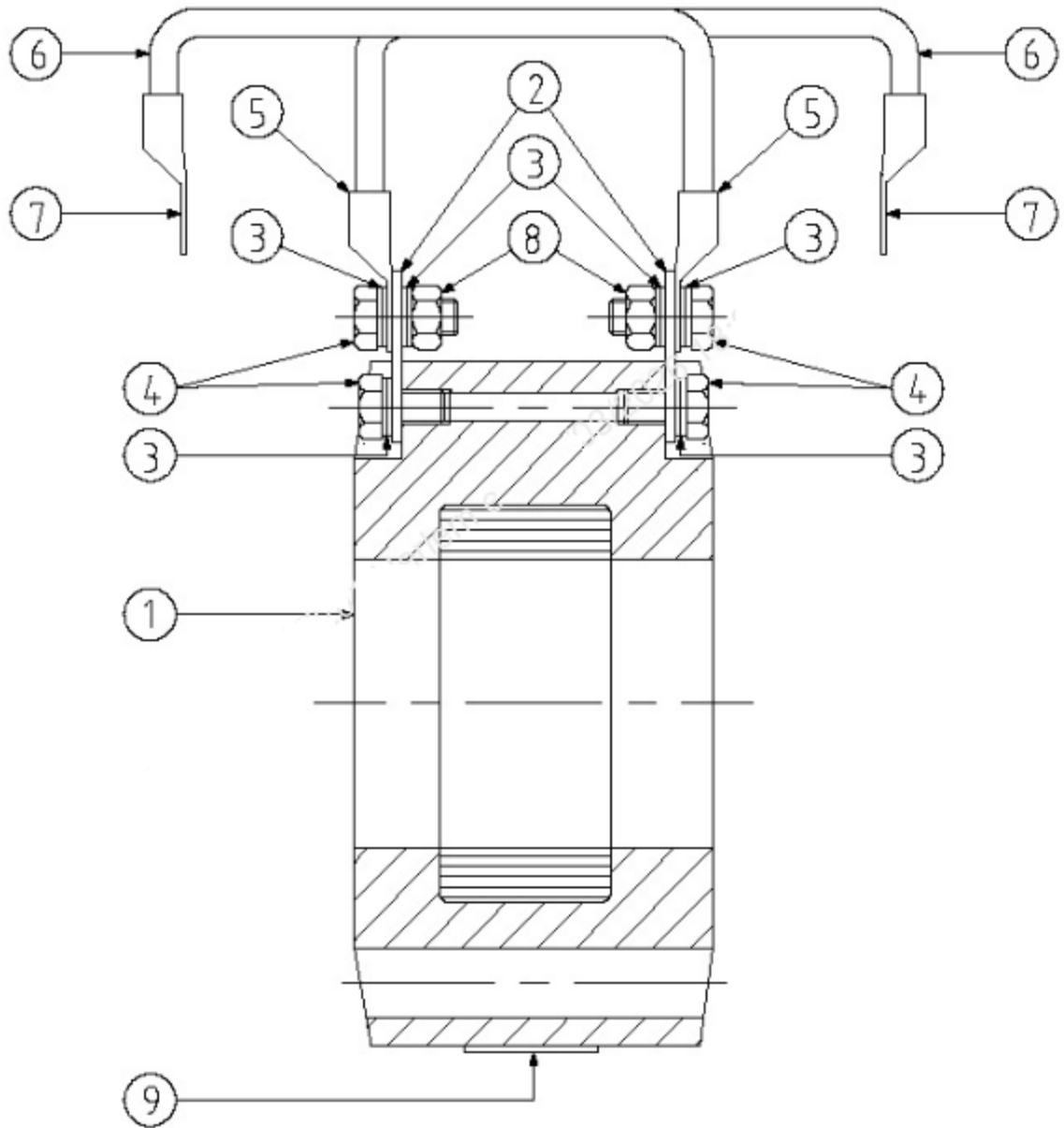
# ATTACHMENT V



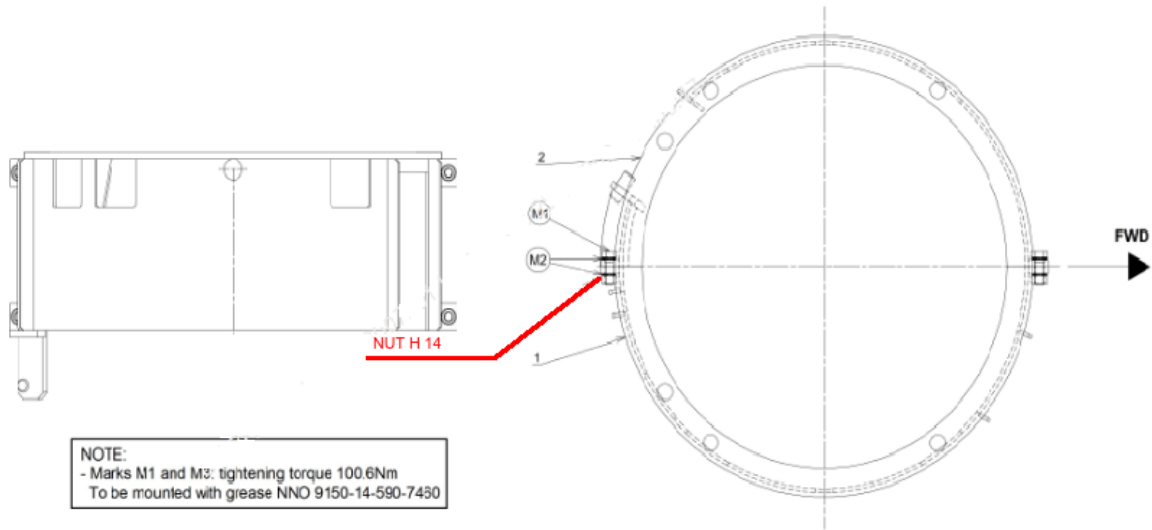
# ATTACHMENT W



# ATTACHMENT X

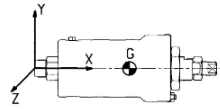
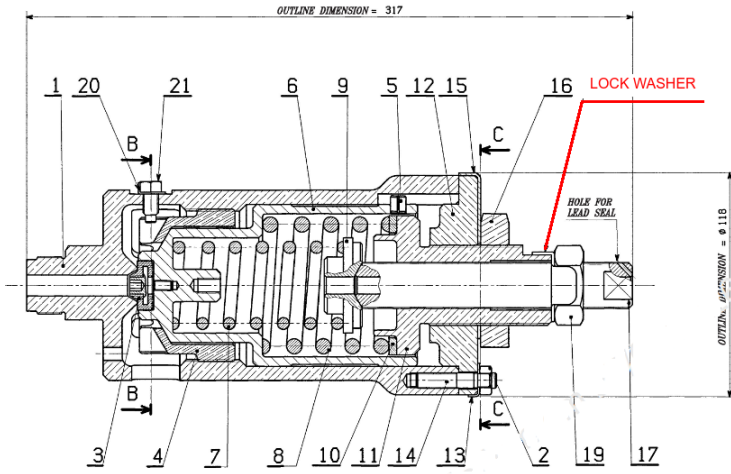


# ATTACHMENT Y



**NOTE:**  
- Marks M1 and M3: tightening torque 100.6Nm  
To be mounted with grease NNO 9150-14-590-7430

# ATTACHMENT Z

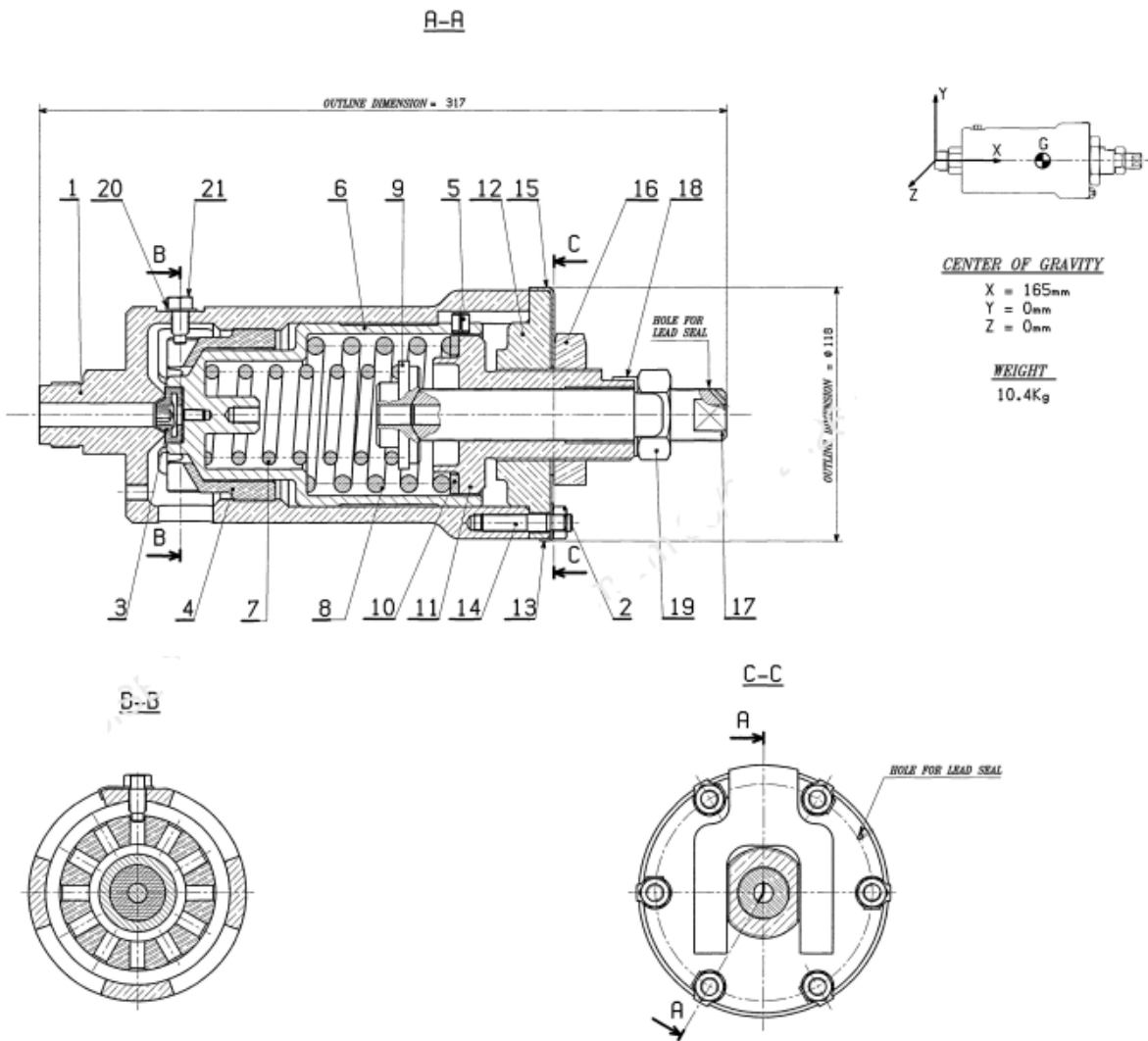


CENTER OF GRAVITY

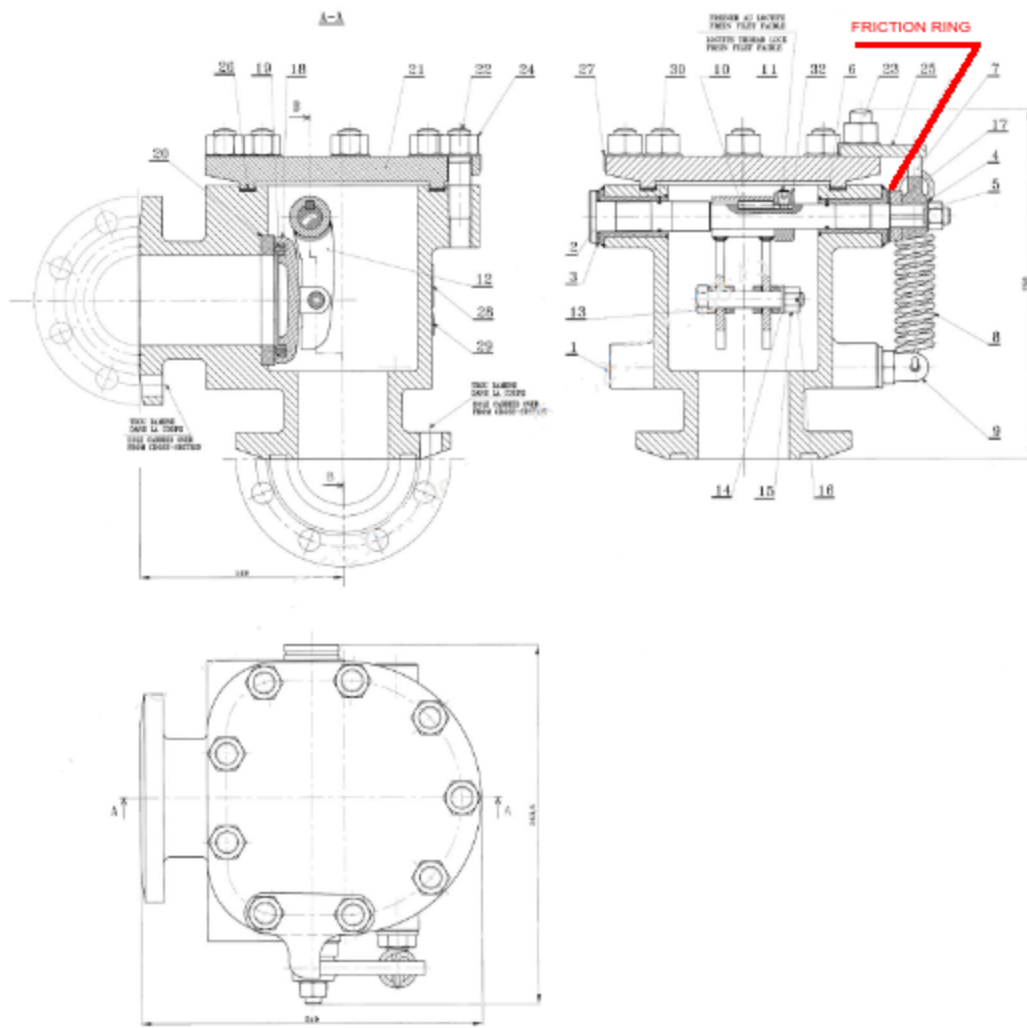
X = 165mm  
 Y = 0mm  
 Z = 0mm

WEIGHT  
 10.4Kg

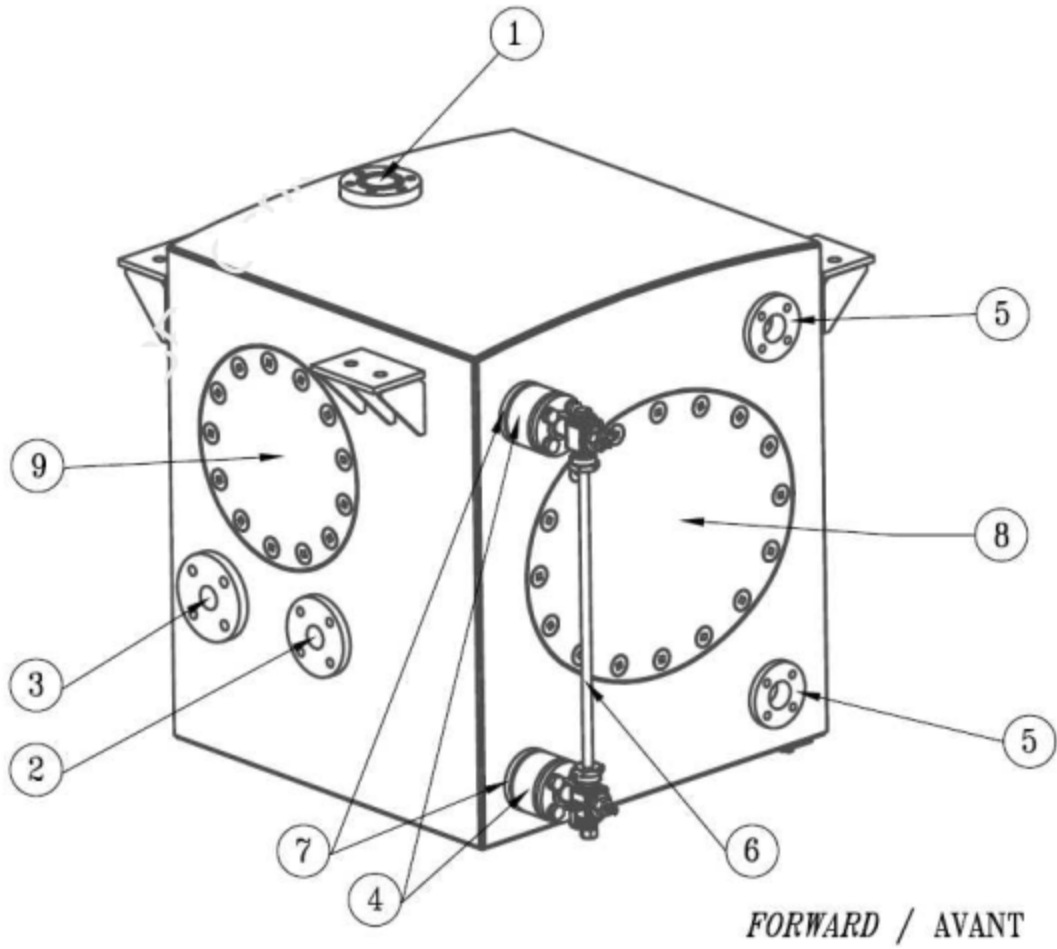
# ATTACHMENT AA



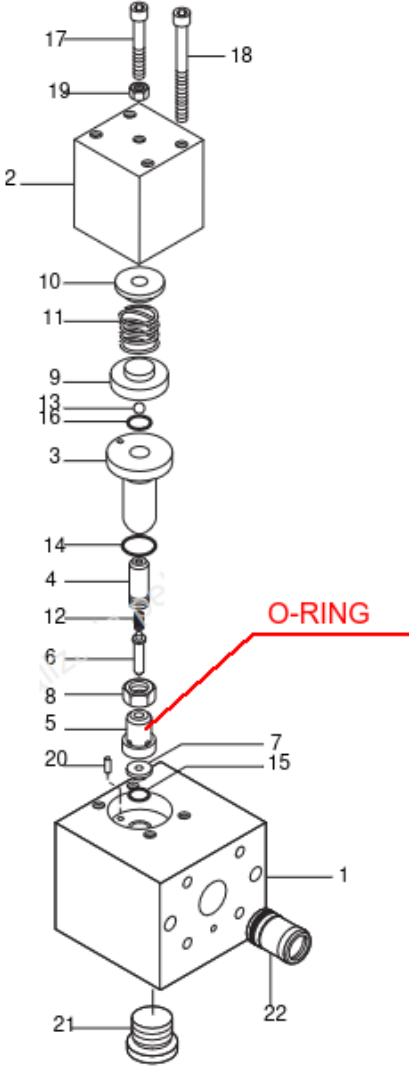
# ATTACHMENT AB



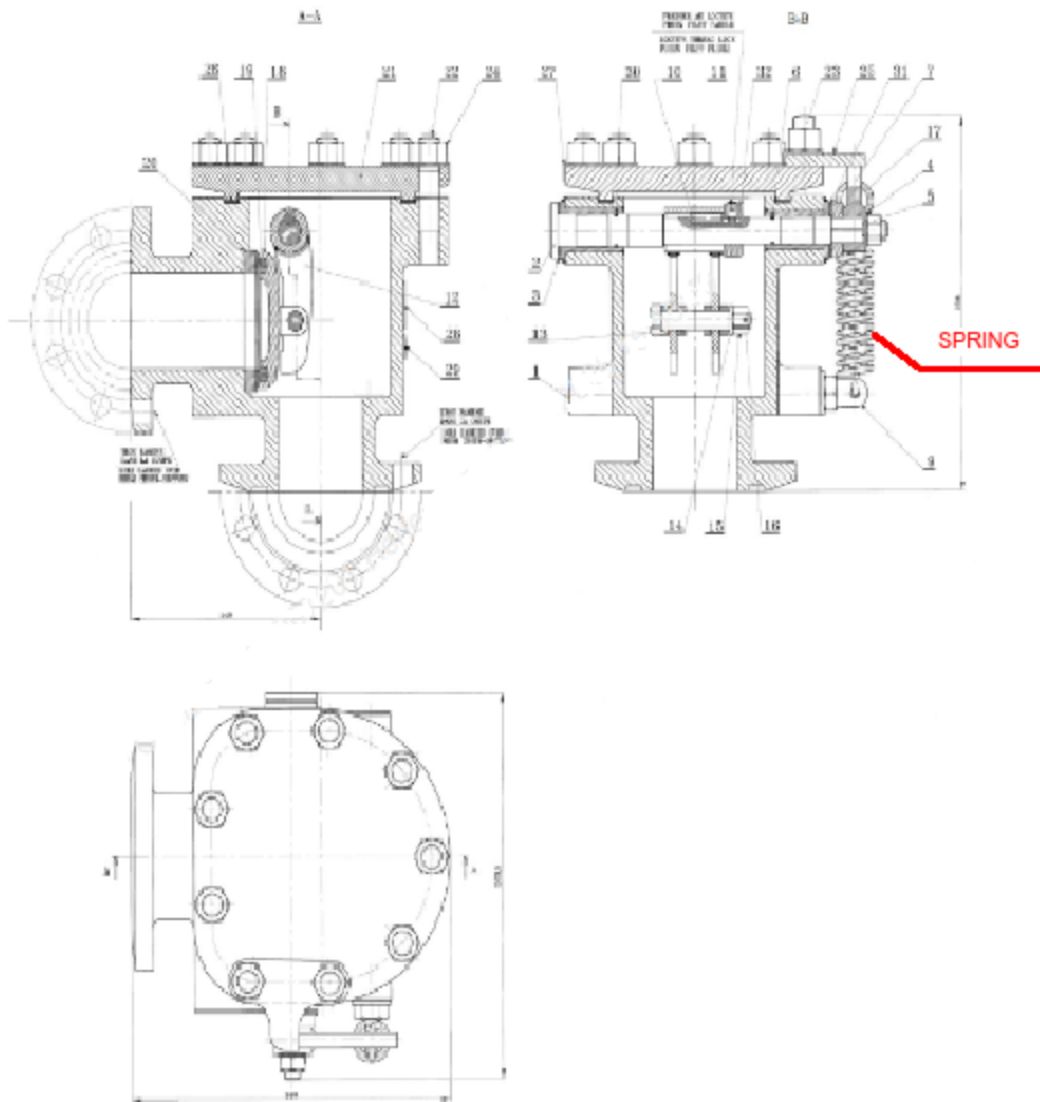
# ATTACHMENT AC



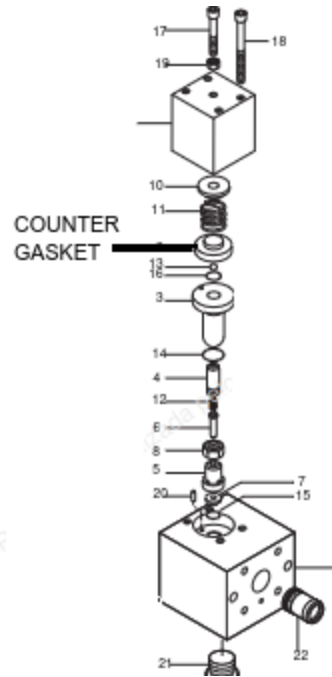
# ATTACHMENT AD



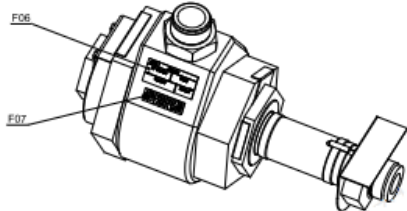
# ATTACHMENT AE



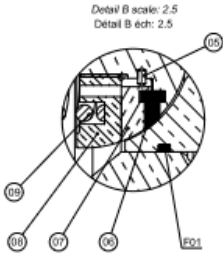
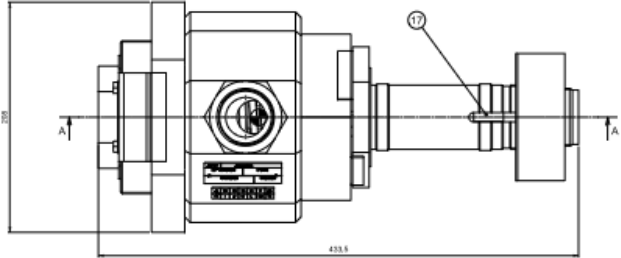
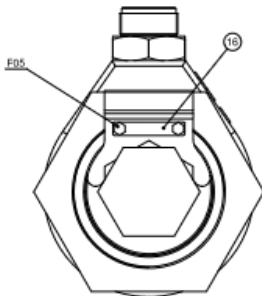
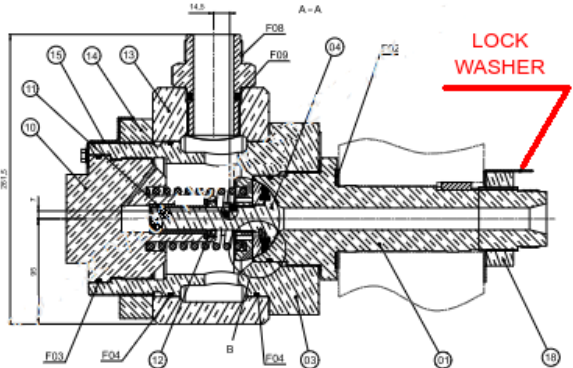
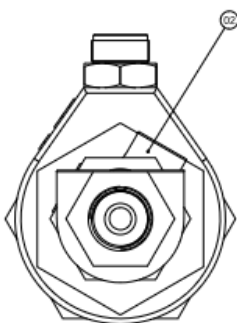
# ATTACHMENT AF



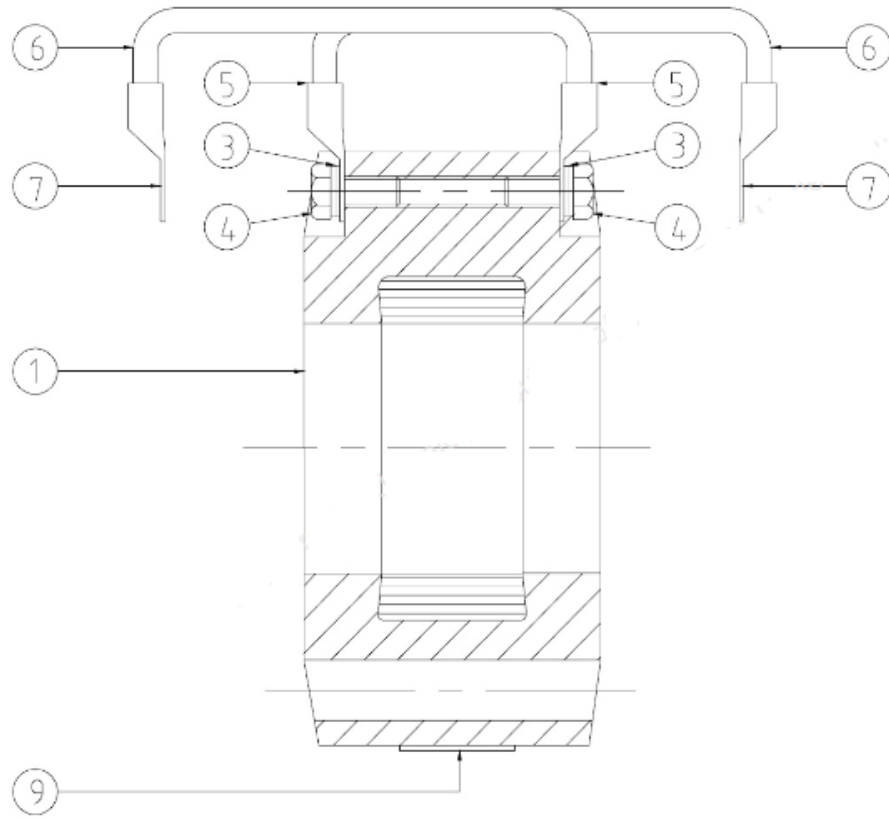
# ATTACHMENT AG



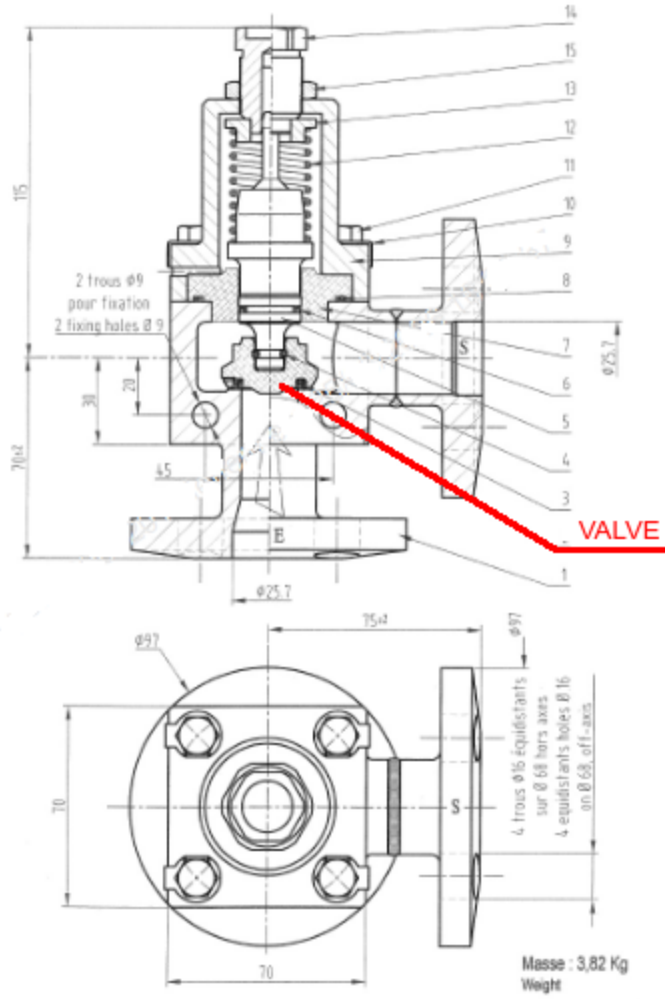
Dimension weight: 45,3 Kg  
 Mass center: 45,3 Kg



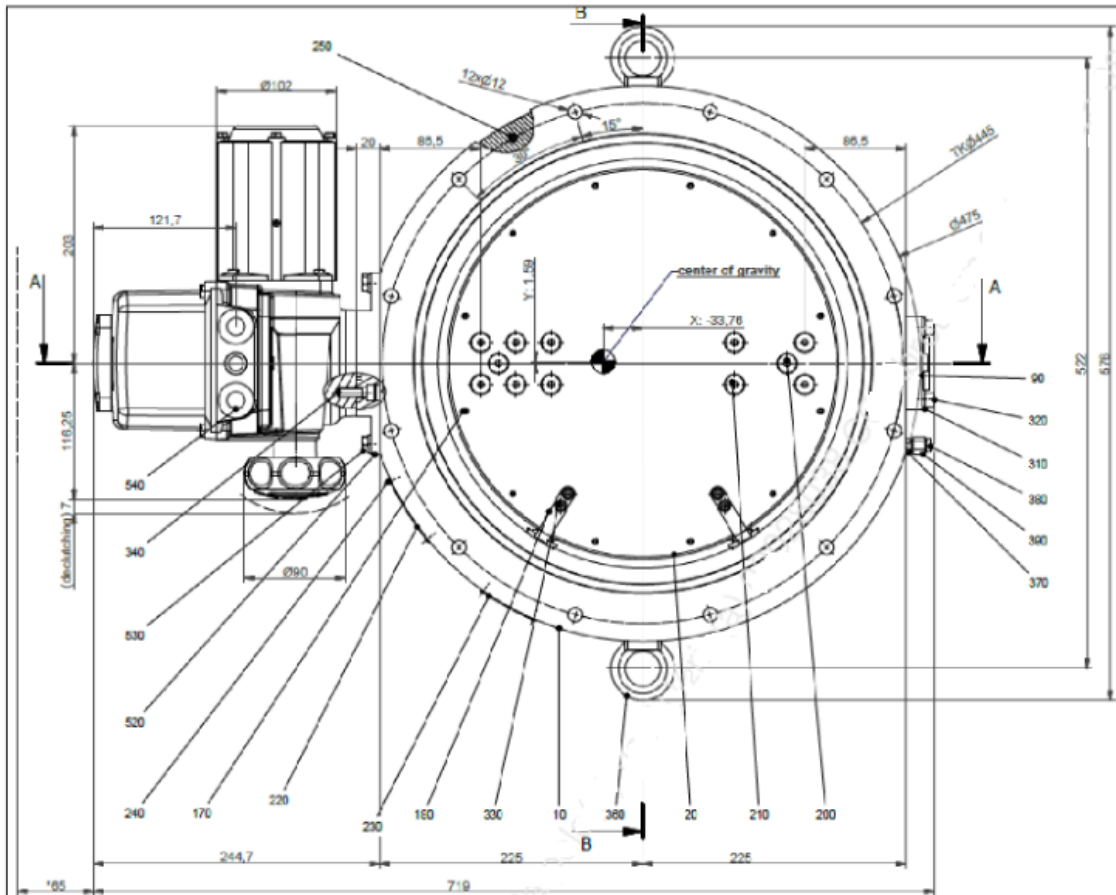
# ATTACHMENT AH



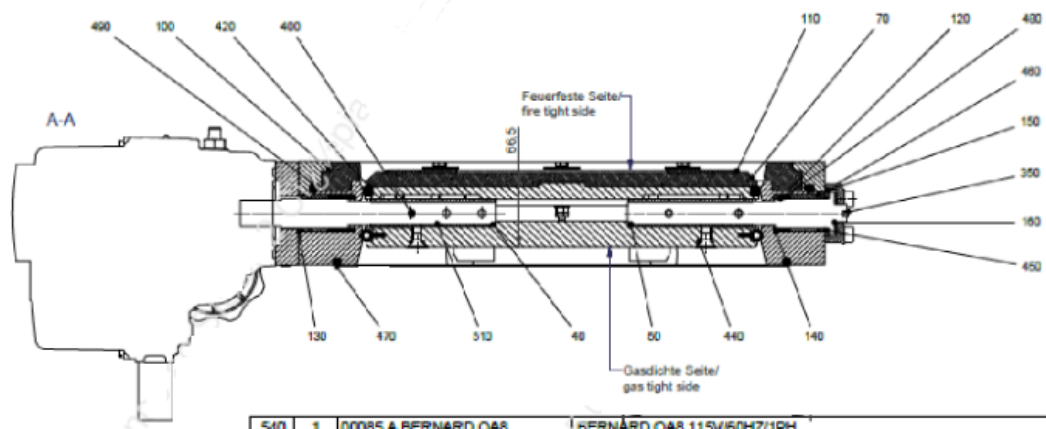
# ATTACHMENT AI



# ATTACHMENT AJ

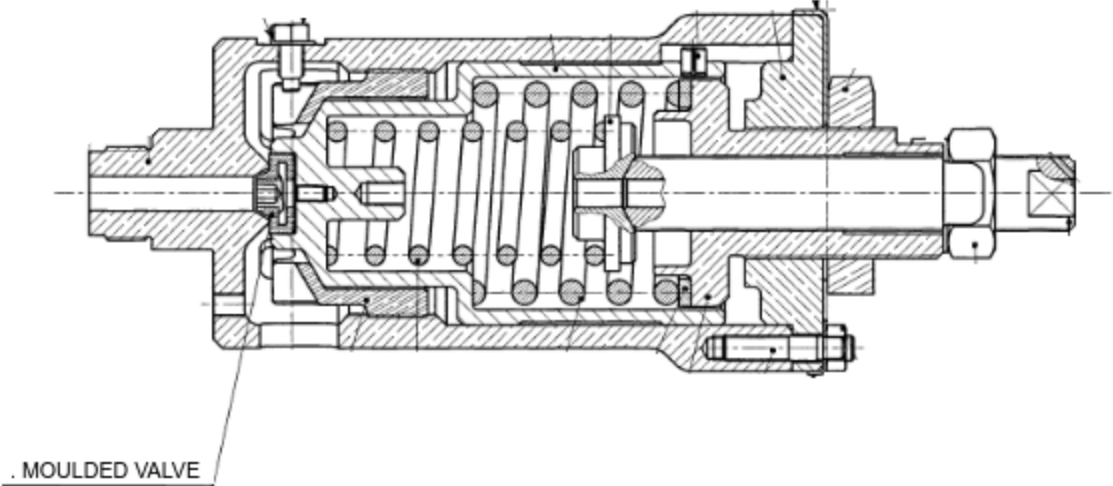


\* minimum mounting space

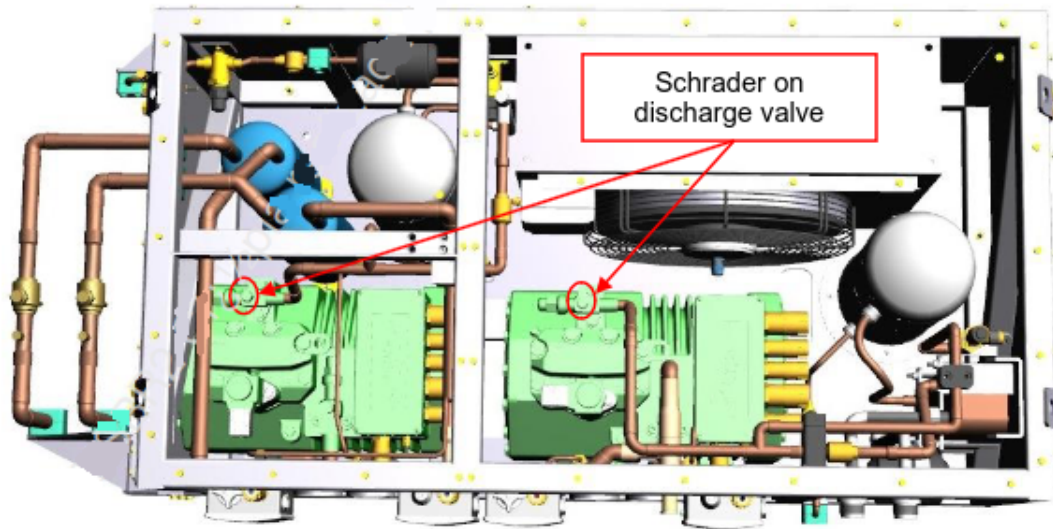


540	1	00085.A BERNARD OA8	BERNARD OA8 115V/60HZ/1PH
530	4	DIN 933 - M8 x 25	HEXAGONAL HEAD SCREW M8X25
520	1	QKCM802	SUPPORT
510	1	QKCM-S12.00	DRIVE SHAFT RBSK Cm
500	1	RKHD-1125.00	FLANGE RFA DN350
490	1	RKH0805	FLANGE GASKET R75 DN350
480	5	01781	PACKING GLAND C25X32X4
470	1	RKH0806	FLANGE GASKET R75 DN350
460	2	01720.OE	O-RING 28,3x1,78
450	2	01624.OE	O-RING 25,12x1,78
440	12	00682	O-RING 8X2
430	1	RKH0711	BUTTERFLY GASKET R10E DN350
420	1	RKH0712	BUTTERFLY GASKET R8K DN350

ATTACHMENT AK



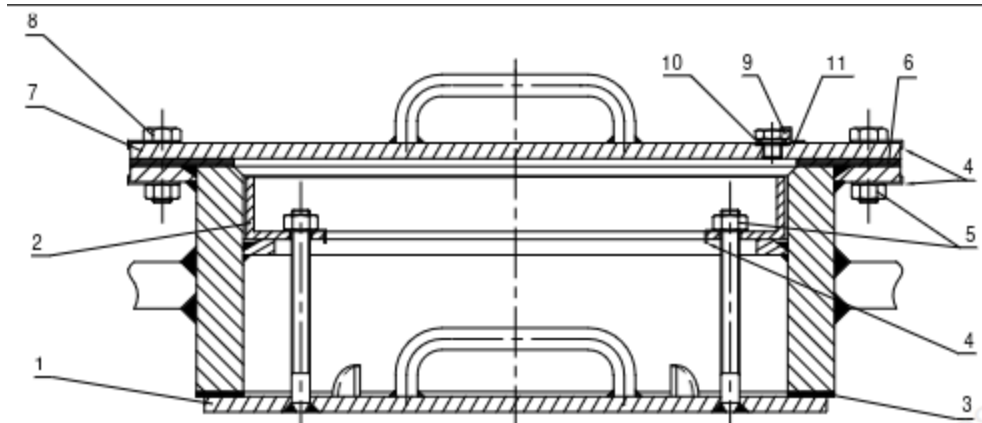
# ATTACHMENT AL





**Rupture disc and safety valve**

# ATTACHMENT AM



BBRUCE ENGLE FRÓES  
Lieutenant-Commander  
Ship Manager Auxiliary  
ASSINADO DIGITALMENTE